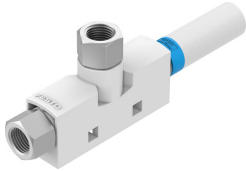


# Vacuum generator VN-14-L-T4-PI4-VI5-RO2

Part number: 547708

FESTO



## Data sheet

| Feature                                       | Value   |
|---|---|
| Nominal width of Laval nozzle                 | 1.4 mm  |
| Width dimension                               | 18 mm   |
| Type code                                     | VN  |
| Muffler construction type                     | Open  |
| Mounting position                             | Any   |
| Ejector characteristics                       | High suction rate<br>Standard   |
| Integrated function                           | Pneumatic muffler open  |
| Structural design                             | T-shape   |
| Symbol  | 00991489  |
| Operating pressure for max. suction rate      | 8 bar   |
| Operating pressure                            | 1 bar ... 8 bar   |
| Nominal operating pressure                    | 6 bar   |
| Max. suction rate with respect to atmosphere  | 90 l/min  |
| Air supply time at nominal operating pressure | 0.25 s  |
| Operating medium                              | Compressed air as per ISO 8573-1:2010 [7:4:4]   |
| Information on operating and pilot media      | Operation with oil lubrication not possible   |
| Corrosion resistance class (CRC)              | 2 - Moderate corrosion stress   |
| Temperature of medium                         | 0 °C ... 60 °C  |
| Noise level at nominal operating pressure     | 77 dB(A)  |
| Ambient temperature                           | 0 °C ... 60 °C  |
| Max. tightening torque                        | 0.5 Nm  |
| Product weight                                | 40 g  |
| Type of mounting                              | With through-hole<br>With accessories   |
| Pneumatic connection 1                        | G1/8  |
| Pneumatic connection 3                        | Pneumatic muffler open  |
| Vacuum connection                             | G1/4  |
| Material of connecting thread                 | Wrought aluminum alloy, anodized  |
| Note on materials                             | Free of copper and PTFE<br>Contains paint-wetting impairment substances<br>RoHS-compliant |
| Seals material                                | NBR   |
| Female nozzle material                        | POM   |
| Housing material                              | POM-reinforced  |

| Feature                | Value                               |
|------------------------|-------------------------------------|
| Muffler material       | Die-cast aluminum<br>POM<br>PU foam |
| Material of jet nozzle | Wrought aluminum alloy              |